



kathuria techmech  
Delivering excellence

# Empowering Rolling Mills with Proven & Reliable Solutions.

## Rolls

- Composite Rolls
- HSS Rolls
- Adamite Rolls
- Spheroidal Graphite Cast Iron Rolls (SGP & SGA)
- Shafted Rolls (Chilled, Adamite)
- Cr4 Rolls (For Strip Mills)



- ★ Tc Rings in Just 30 Days
- ★★ Bearings & DC Motors in Ready Stock

Rolling Mill Rolls  
(All Grades)



TC Rings★  
(Tungsten/Titanium)



Bearings★★  
(Make: European)



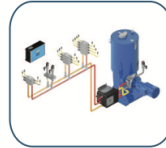
Geared Motors



Electric Motors★★  
AC/DC



Oil-Air Lubrication Systems



Industrial Robots



Cardan Shafts



"Top Quality Products at Unbeatable Prices"

"Trusted by  
Leading Mills Worldwide"

## Stock List as on 21.03.2026

Sr. No.	Description	Make	Quantity (in Nos.)	Delivery
<b>BEARINGS*</b>				
1	Ball Bearing 6012 EA	Reputed	100	Ready
2	Ball Bearing 6014-2RSR S12	Reputed	48	Ready
3	Ball Bearing 6014-2Z-L140E	Reputed	100	Ready
4	Ball Bearing 6206-2Z-EA	Reputed	471	Ready
5	Ball Bearing 6208-2Z-S3-5	Reputed	70	Ready
6	Ball Bearing 6310 EA	Reputed	10	Ready
7	Ball Bearing 6322 C3	Reputed	1	Ready
8	Hybrid Ball Bearing 6202-Z/TN9HC5N3C2H	Reputed	1700	Ready
9	Deep Groove Ball Bearing 6202-ZTN9	Reputed	396	Ready
10	Ball Bearing 6202-2RS1	Reputed	7330	Ready
11	Ball Bearing 6203-2RS1	Reputed	5060	Ready
12	Ball Bearing 6204-2RS1	Reputed	7420	Ready
13	Bearing Sleeve Z-510150.LZL	Reputed	2	Ready
14	Bearing Sleeve LBC4-0095A	Reputed	125	Ready
15	Bearing Sleeve LBC4-0108	Reputed	1	Ready
16	Bearing Sleeve LBC4-0112	Reputed	3	Ready
17	Bearing Sleeve LBC4-0112A	Reputed	182	Ready
18	Bearing Sleeve H2322	Reputed	2	Ready
19	Bearing Sleeve H2328	Reputed	2	Ready
20	Cylindrical Roller Bearing LBC4-0103 A	Reputed	57	Ready
21	Double Row Angular Contact Ball Bearing 305283DA	Reputed	4	Ready
22	Double Row Angular Contact Ball Bearing Z-517458.01.SKL#E	Reputed	8	Ready
23	Double Row Angular Contact Ball Bearing Z-517458.01.SKL (For 160 Neck)	Reputed	241	Ready
24	Double Row Angular Contact Ball Bearing Z-567620.SKL.E (For 200 Neck)	Reputed	18	Ready
25	Double Row Angular Contact Ball Bearing Z-503288.SKLE (For 230 Neck)	Reputed	18	Ready
26	Double Row Angular Contact Ball Bearing 305256D	Reputed	4	Ready
27	Four Row Cylindrical Bearing Z-510150.LZL (CH)	Reputed	198	Ready
28	Four Row Cylindrical Roller Bearing BC4-0051	Reputed	16	Ready
29	Four Row Cylindrical Bearing RBC4 0103B	Reputed	36	Ready
30	Four Row Cylindrical Bearing RBC4 0113B	Reputed	32	Ready
31	Four Row Cylindrical Bearing RBC4-0114F	Reputed	48	Ready
32	Four Row Cylindrical Roller Bearing LBC4-0114	Reputed	48	Ready
33	Four Row Cylindrical Roller Bearing BC4-0107 (For 280 Neck)	Reputed	3	Ready
34	Four Row Cylindrical Roller Bearing Z-507536.02.ZL (For 180 Neck)	Reputed	12	Ready
35	Four Row Cylindrical Roller Bearing BC4-0103A (RBC4-0103 + LBC4-0103)	Reputed	38	Ready
36	Four Row Cylindrical Bearing Z-510150.LZLN	Reputed	310	Ready
37	Four Row Cylindrical Roller Bearing Z-510150.02.ZLE (For 160 Neck)	Reputed	60	Ready
38	Four Row Cylindrical Roller Bearing Z-510150.07.ZL (For 160 Neck)	Reputed	4	Ready
39	Plummer (pillow) Block Housing SNL 512-610	Reputed	10	Ready
40	Single Row Cylindrical Roller Bearing NU222-EXL-M1-QP-C3S	Reputed	5	Ready
41	Single Row Cylindrical Roller Bearing NU2318-EXL-M1-QP-C3S	Reputed	38	Ready
42	Four-Point Contact Ball Bearing QJ216MA	Reputed	4	Ready
43	Spherical Roller Bearing 22220E1XLKN1A	Reputed	2	Ready
44	Spherical Roller Bearing 22206/E/C3	Reputed	1	Ready
45	Spherical Roller Bearing 22224-E1-K-IN	Reputed	104	Ready
46	Spherical Roller Bearing 22224-E1-XL-K-C3-EA	Reputed	104	Ready
47	Spherical Roller Bearing 22224-E1XLKEA	Reputed	10	Ready
48	Spherical Roller Bearing 22230 KCC/W33	Reputed	106	Ready
49	Spherical Roller Bearing 22318-E1-XL-C3S	Reputed	18	Ready

50	Spherical Roller Bearing 23022-E1-A-XL-M-EA	Reputed	10	Ready
51	Spherical Roller Bearing 23026-E1-A-XL-M-EA	Reputed	14	Ready
52	Spherical Roller Bearing 23028 E1A XL MN1A	Reputed	1	Ready
53	Spherical Roller Bearing 23032-E1A-XL-M-C3E	Reputed	10	Ready
54	Spherical Roller Bearing 23052 BE-XL#N	Reputed	1	Ready
55	Spherical Roller Bearing 23122-E1-A-XL-M-EA	Reputed	4	Ready
56	Spherical Roller Bearing 23126 C3W33	Reputed	2	Ready
57	Spherical Roller Bearing 23128-E1-A-XL-M-C3-N1A	Reputed	33	Ready
58	Spherical Roller Bearing 23134 E1A XL MN1A	Reputed	1	Ready
59	Spherical Roller Bearing 23220 E1A XL-M-C3S	Reputed	1	Ready
60	Spherical Roller Bearing F-573288.24032-S-K30 C3	Reputed	24	Ready
61	Spherical Roller Bearing 24036-BE-XL-K30-C3-N1	Reputed	3	Ready
62	Spherical Roller Bearing 24040-BE-XLC3	Reputed	15	Ready
63	Spherical Roller Bearing 24040-BS K30-MB-C3S	Reputed	28	Ready
64	Spherical Roller bearing24040-BE-XL-K30-C3N	Reputed	20	Ready
65	Spherical Roller Bearing 24040 CCK30/C3W33	Reputed	10	Ready
66	Spherical Roller Bearing 24044-BE-XL-K30-C3N	Reputed	14	Ready
67	Spherical Roller Bearing 24044 CC/K30/C3W33	Reputed	2	Ready
68	Spherical Roller Bearing 24044 CC/C3W33	Reputed	4	Ready
69	Spherical Roller Bearing 24048 CC/W33	Reputed	21	Ready
70	Spherical Roller Bearing 24048 CCK30/C3W33	Reputed	2	Ready
71	Spherical Roller Bearing 24052-BE-XL-K30-C3N	Reputed	11	Ready
72	Spherical Roller Bearing 24052-BE-XL-C3	Reputed	1	Ready
73	Spherical Roller Bearing 24056 CCK30/C3W33	Reputed	3	Ready
74	Spherical Roller Bearing 24056 CC/C3W33	Reputed	9	Ready
75	Spherical Roller bearing 24056-BE-XL-K30-C3	Reputed	3	Ready
76	Spherical Roller Bearing F-572423-24030 S#S1	Reputed	12	Ready
77	Spherical Roller Bearing 23956 CA/W33 (ZWZ)	Reputed	17	Ready
78	Spherical Roller Bearing 23964 CA/W33 (ZWZ)	Reputed	28	Ready
79	Spherical Roller Bearing 23944 CA/W33 (ZWZ)	Reputed	17	Ready
80	Spherical Roller Bearing 23938 CC/W33	Reputed	10	Ready
81	Spherical Roller Bearing 23934 CC/W33	Reputed	21	Ready
82	Spherical Roller Bearing 24024 BE XLN1	Reputed	1	Ready
83	Spherical Roller Bearing 23218-E1A-XL-K-M-C3	Reputed	30	Ready
84	Four Row Cylindrical Roller Bearing FC 5678220A/C4YA3 (BC4-0107 )	Reputed	20	Ready
85	Four Row Cylindrical Roller Bearing FC 3652168A/C4YA3 (BC4-0114)	Reputed	20	Ready
86	Four Row Cylindrical Roller Bearing FC 3246168A/C4YA3 (BC4-0103)	Reputed	4	Ready
87	Four Row Cylindrical Roller Bearing BC4-0112	Reputed	14	Ready
88	Four Row Cylindrical Roller Bearing RBC4-0112	Reputed	3	Ready
89	Four Row Cylindrical Roller Bearing RBC4-0112 B	Reputed	84	Ready
90	Four Row Cylindrical Roller Bearing FC 4666206A/C4YA3 (BC4-0112)	Reputed	18	Ready
91	Four Row Cylindrical Roller Bearing FC4054170A/C4YA3 (BC4-0113)	Reputed	50	Ready
92	Sleeve for FC5678220A/C4YA3.02 (313822)	Reputed	20	Ready
93	Sleeve for FC 4666206A/YA3.02 (313824)	Reputed	18	Ready
94	Sleeve for FC4054170A/C4YA3.02 (314553)	Reputed	20	Ready
95	Sleeve for FC3246168A/YA3.02 (315189A)	Reputed	4	Ready
96	Taper Roller Bearing 30203 J2/Q	Reputed	420	Ready
97	Taper Roller Bearing 30204 J2/Q	Reputed	3592	Ready
98	Taper Roller Bearing 30302 J2/Q	Reputed	1200	Ready
99	Taper Roller Bearing 32230 XL#N1	Reputed	3	Ready
100	Tapered Roller Thrust Bearing 351019C	Reputed	4	Ready
101	Tapered Roller Thrust Bearing - 92744 (351019 C)	Reputed	20	Ready
102	Tapered Roller Thrust Bearing - 92734 (350980C)	Reputed	20	Ready
103	Thrust Roller Bearing 350980 C	Reputed	2	Ready
104	Single Row Tapered Roller Bearing 31324 XN1A	Reputed	1	Ready
105	Single Row Tapered Roller Bearing 32056 X-N1A	Reputed	1	Ready
106	Single Row Taper Roller Bearing 32207-XLE	Reputed	100	Ready
107	Single Row Taper Roller Bearing 32305J2/Q	Reputed	908	Ready

108	Angular contact ball bearing 4034X2BM/YA1	Reputed	20	Ready
109	Double Row Deep groove Ball Bearing 4030X3DM/W33 (305283DA)	Reputed	20	Ready
110	Single Row Deep Groove Ball Bearing 6008-2ZEA	Reputed	10	Ready
111	Single Row Deep Groove Ball Bearing 61872 MA (ZW)	Reputed	28	Ready
112	Single Row Deep Groove Ball Bearing 61860 MA (ZW)	Reputed	18	Ready
113	Single Row Deep Groove Ball Bearing 61848 MA (ZW)	Reputed	1	Ready
114	Single Row Deep Groove Ball Bearing 61938 MA (ZW)	Reputed	6	Ready
115	Deep Groove Ball Bearing 6000-ZTN9	Reputed	2460	Ready
116	Deep Groove Ball Bearing 6004-2RS1	Reputed	1520	Ready
117	Deep Groove Ball Bearing 6052M	Reputed	128	Ready
118	Deep Groove Ball Bearing 61934M (ZW)	Reputed	12	Ready
119	Deep Groove Ball Bearing 6201-C-2Z	Reputed	10	Ready
120	Deep Groove Ball Bearing 6205-ZZ/C3	Reputed	572	Ready
121	Deep Groove Ball Bearing Z506964 KL N1	Reputed	16	Ready
122	Four-Row Tapered Roller Bearing C9(331381)	Reputed	6	Ready
123	Four-Row Tapered Roller Bearing 380648/HCC9	Reputed	6	Ready

### D.C. MOTORS\*

1	DC Motor-350 KW, Output RPM 0-750-1500, Frame size ILFC 280L3, Voltage 440	IE	2	Ready
2	DC Motor-250 KW, Output RPM 2300, Frame size 200J, Voltage 415	RP	4	Ready
3	DC Motor-135 KW, Output RPM 500, Frame size ILFC 280L, Voltage 400	IE	1	Ready
4	DC Motor-110 KW, Output RPM 2200, Frame size ILFC 200L, Voltage 400	IE	2	Ready
5	DC Motor-90 KW, Output RPM 2200, Frame size ILFC 200S, Voltage 440	IE	2	Ready
6	DC Motor-30 KW, Output RPM 1000, Frame size ILFC 160L, Voltage 440	IE	2	Ready

### GEAR COUPLINGS\*

1	Gear Coupling - 01	Reputed	20	Within 10-15 Days
2	Gear Coupling - 02	Reputed	20	Within 10-15 Days
3	Gear Coupling - 03	Reputed	20	Within 10-15 Days
4	Gear Coupling - 04	Reputed	20	Within 10-15 Days
5	Gear Coupling - 05	Reputed	20	Within 10-15 Days
6	Gear Coupling - 06	Reputed	20	Within 10-15 Days
7	Gear Coupling - 07	Reputed	20	Within 10-15 Days
8	Gear Coupling - 08	Reputed	20	Within 10-15 Days
9	Gear Coupling - 09	Reputed	20	Within 10-15 Days
10	Gear Coupling - 10	Reputed	20	Within 10-15 Days
11	Gear Coupling - 11	Reputed	5	Within 10-15 Days
12	Gear Coupling - 12	Reputed	5	Within 10-15 Days
13	Gear Coupling - 13	Reputed	5	Within 10-15 Days
14	Gear Coupling - 14	Reputed	5	Within 10-15 Days
15	Gear Coupling - 15	Reputed	5	Within 10-15 Days

### BEARING HEATERS\*

1	Bearing Heater 200 SMART 400V	Reputed	3	Ready
2	Electric Sleeve Puller (For Four Row Cylindrical Roller Bearings)	KTPL	On Order	45 Days

### ROLLS\*

1	ADAMITE ROLLS 500X1580X2372 MM	KTPL	9	Ready
---	--------------------------------	------	---	-------

### TC RINGS\*

1	TC RINGS SIZE 212X120X72 MM	KTPL	4	Ready
2	TC RINGS SIZE 212X120X60 MM	KTPL	4	Ready
3	TC RINGS SIZE 216X160X70 MM	KTPL	16	Ready
4	TC RINGS SIZE 216X160X68.50 MM	KTPL	4	Ready
5	TC RINGS 170.66X94X70 MM	KTPL	2	Ready

\*Note: Above stock is subject to prior sale

**Special Rates available for Rolls (All Grades), TC Rings, Geared Motors, Chain etc.**

## Contact us Today!!!

KATHURIA TECHMECH PVT. LTD.,  
CORPORATE OFFICE: A7/116, SSGT ROAD INDUSTRIAL AREA, GHAZIABAD (UP) 201 009 (INDIA)  
Email ID: [kathuriatechmech@gmail.com](mailto:kathuriatechmech@gmail.com) Contact: +91 98104 66783, +91 77196 17471